

ELLIPSIS 30_H 2

Horizontal



ELLIPSIS 30_H 2 HORIZONTAL

10 elements, height 400 mm, length 1530 mm. Matt Sage Green finish (cod. 2V). Configuration cod. 01.



Technical features:

- manifolds with a 30 mm diameter circular section
- tubes made of sheet steel with a 30x15 mm elliptical section
- manifold threading 1/2" Gas right
- maximum working pressure 4 bar
- maximum working temperature 95°C

Finishes available	Surcharge
Standard White	
Classic finishes	
Special finishes	
Other RAL colors	

Finishing codes see page 22



Model	Code	Depth	Lenght	Conn. C.	Weight	Cap.
		mm	L mm	L' mm	Kg	lt
530	HE2 0530 YY 01 IR 01 H	58	530	470	0,81	0,33
560	HE2 0560 YY 01 IR 01 H	58	560	500	0,85	0,35
660	HE2 0660 YY 01 IR 01 H	58	660	600	0,97	0,40
680	HE2 0680 YY 01 IR 01 H	58	680	620	0,99	0,41
710	HE2 0710 YY 01 IR 01 H	58	710	650	1,03	0,43
760	HE2 0760 YY 01 IR 01 H	58	760	700	1,09	0,45
860	HE2 0860 YY 01 IR 01 H	58	860	800	1,22	0,51
880	HE2 0880 YY 01 IR 01 H	58	880	820	1,24	0,52
930	HE2 0930 YY 01 IR 01 H	58	930	870	1,30	0,55
1030	HE2 1030 YY 01 IR 01 H	58	1030	970	1,43	0,60
1230	HE2 1230 YY 01 IR 01 H	58	1230	1170	1,67	0,71
1530	HE2 1530 YY 01 IR 01 H	58	1530	1470	2,04	0,88
1830	HE2 1830 YY 01 IR 01 H	58	1830	1770	2,41	1,04
2030	HE2 2030 YY 01 IR 01 H	58	2030	1970	2,66	1,15
2230	HE2 2230 YY 01 IR 01 H	58	2230	2170	2,90	1,26

Price included:

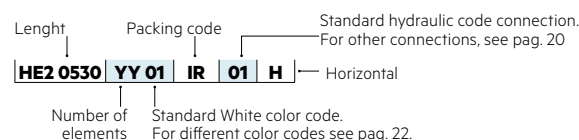


Number of elements:

Radiators with an odd number of elements will be supplied at the same price as a radiator with the next even number of elements.

For example: a ELLIPSIS 30_H 2 Horizontal 1830 lenght and 9 elements wide = the price of a ELLIPSIS 30_H 2 Horizontal 1830 lenght and 10 elements wide.

Key Codes



(*) Thanks to the high performance of Irsap ELLIPSIS 30_H 2 Horizontal radiators, the ideal Δt for low temperature projects is Δt at 30°C.

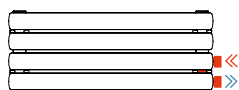
For Δt different from 50°C use the formula: $Q=Q_n (\Delta t / 50)^\alpha$

ELLIPSIS 30_H 2 Horizontal: Power in Watt for linear metre

N. el.	04	06	08	10	12	14	16	18	20	22	24	26	28	30	32	34	36	38	40	42	44	46	48	50
Btu/h a $\Delta t=50^\circ\text{C}$	1370,4	1795,1	2175,4	2528,1	2861,6	3181,5	3490,8	3792,6	4087,6	4378,1	4664,2	4947,6	5228,5	5507,5	5785,4	6062,2	6338,4	6614,6	6890,8	7167,0	7442,9	7719,1	7995,2	8271,4
Watt a $\Delta t=50^\circ\text{C}$	401,4	525,8	637,2	740,5	838,2	931,9	1022,5	1110,9	1197,3	1282,4	1366,2	1449,2	1531,5	1613,2	1694,6	1775,7	1856,6	1937,5	2018,4	2099,3	2180,1	2261,0	2341,9	2422,8
Watt a $\Delta t=40^\circ\text{C}$	309,6	405,3	491,0	569,8	647,6	723,1	790,2	855,1	916,2	975,7	1048,5	1111,5	1174,1	1236,2	1298,0	1359,2	1420,5	1481,7	1542,9	1603,6	1664,6	1725,6	1786,2	1847,0
Watt a $\Delta t=30^\circ\text{C}^*$	221,5	289,8	350,9	406,5	464,4	521,3	566,8	610,2	648,9	685,9	745,4	789,5	833,5	877,0	920,4	962,9	1005,8	1048,5	1091,2	1133,2	1175,6	1218,0	1259,6	1301,8
Watt a $\Delta t=20^\circ\text{C}$	158,2	180,6	218,5	252,5	290,6	328,8	354,8	379,2	399,1	417,4	460,8	487,5	514,2	540,7	566,9	592,4	618,3	644,0	669,7	694,6	720,1	745,4	770,0	795,1
Modification index	1,164	1,166	1,168	1,174	1,156	1,137	1,155	1,173	1,199	1,225	1,186	1,189	1,191	1,193	1,195	1,198	1,200	1,202	1,204	1,207	1,209	1,211	1,214	1,216

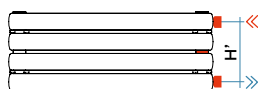
Special Options

Cod. 88



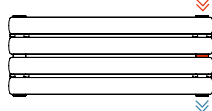
Welded manifolds
50 mm pitch
Universal
connection

Cod. 82



Welded
manifolds

Cod. 80



Internal
Diaphragm

Manifolds:

The pipefittings welded on the side manifold can be positioned at any point at a specified distance between centres. It is compulsory in this type of installation to install a diaphragm during production to ensure the product functions correctly. The minimum possible distance between centres is equal to 50 mm (cod. 88), while the maximum distance depends on the height of the radiator (cod. 82).

The maximum distance between centres is equal to the number of elements - 1 multiplied by 40 (element pitch): $H' = 40 \times (n^\circ \text{ of elements} - 1)$.

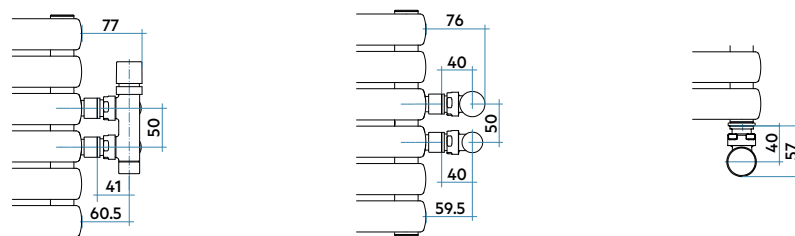
Side Connections (Cod. M82, M88): for side water connections insert an internal flow diverter to the bottom manifold

Internal Diaphragm (Cod. M80): Prearrangement for side connections with 1/2" welded fittings and internal baffle

Configured for connection with single-pipe valve: connection available only for modul and/or double-pipe systems, no monotube valve with loop - (specify water inlet)

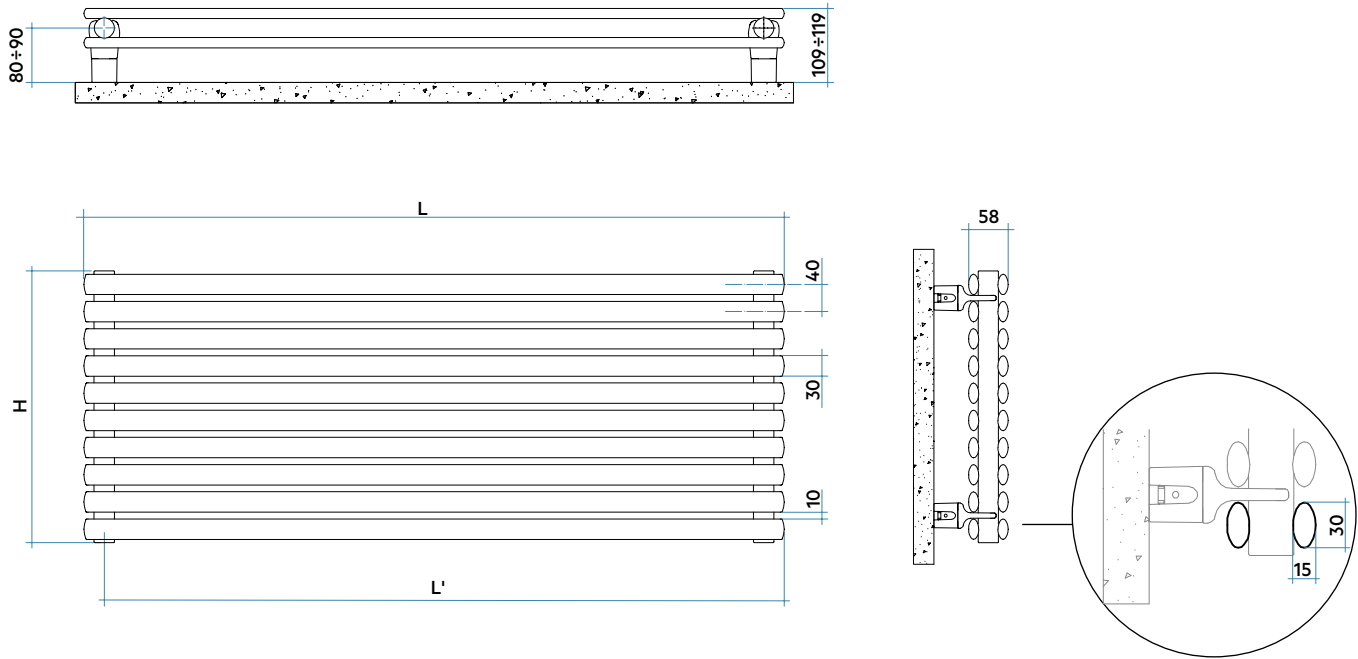
For other connections see page 20

Connection dimensions with Irsap valves



ELLIPSIS 30_H 2

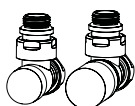
Horizontal



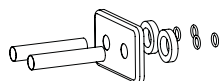
COMPLETE BATTERY DATA

		LENGHT (L)															
H = Height		530	560	660	680	710	760	860	880	930	1030	1230	1530	1830	2030	2230	
Height mm	160																
yy = N° elem.	4	W	213	225	265	273	285	305	345	353	373	413	494	614	735	815	895
Height mm	240																
yy = N° elem.	6	W	279	294	347	358	373	400	452	463	489	542	647	804	962	1067	1173
Height mm	320																
yy = N° elem.	8	W	338	357	421	433	452	484	548	561	593	656	784	975	1166	1294	1421
Height mm	400																
yy = N° elem.	10	W	392	415	489	504	526	563	637	652	689	763	911	1133	1355	1503	1651
Height mm	480																
yy = N° elem.	12	W	444	469	553	570	595	637	721	738	780	863	1031	1282	1534	1702	1869
Height mm	560																
yy = N° elem.	14	W	494	522	615	634	662	708	801	820	867	960	1146	1426	1705	1892	2078
Height mm	640																
yy = N° elem.	16	W	542	573	675	695	726	777	879	900	951	1053	1258	1564	1871	2076	2280
Height mm	720																
yy = N° elem.	18	W	589	622	733	755	789	844	955	978	1033	1144	1366	1700	2033	2255	2477
Height mm	800																
yy = N° elem.	20	W	635	670	790	814	850	910	1030	1054	1113	1233	1473	1832	2191	2431	2670
Height mm	880																
yy = N° elem.	22	W	680	718	846	872	911	975	1103	1129	1193	1321	1577	1962	2347	2603	2860
Height mm	960																
yy = N° elem.	24	W	724	765	902	929	970	1038	1175	1202	1271	1407	1680	2090	2500	2773	
Height mm	1040																
yy = N° elem.	26	W	768	812	956	985	1029	1101	1246	1275	1348	1493	1783	2217	2652		
Height mm	1120																
yy = N° elem.	28	W	812	858	1011	1041	1087	1164	1317	1348	1424	1577	1884	2343	2803		
Height mm	1200																
yy = N° elem.	30	W	855	903	1065	1097	1145	1226	1387	1420	1500	1662	1984	2468			
Height mm	1280																
yy = N° elem.	32	W	898	949	1118	1152	1203	1288	1457	1491	1576	1745	2084	2593			
Height mm	1360																
yy = N° elem.	34	W	941	994	1172	1207	1261	1350	1527	1563	1651	1829	2184				
Height mm	1440																
yy = N° elem.	36	W	984	1040	1225	1262	1318	1411	1597	1634	1727	1912	2284				
Height mm	1520																
yy = N° elem.	38	W	1027	1085	1279	1318	1376	1473	1666	1705	1802	1996	2383				
Height mm	1600																
yy = N° elem.	40	W	1070	1130	1332	1373	1433	1534	1736	1776	1877	2079	2483				
Height mm	1680																
yy = N° elem.	42	W	1113	1176	1386	1428	1491	1595	1805	1847	1952	2162					
Height mm	1760																
yy = N° elem.	44	W	1155	1221	1439	1482	1548	1657	1875	1918	2027	2246					
Height mm	1840																
yy = N° elem.	46	W	1198	1266	1492	1537	1605	1718	1944	1990	2103						
Height mm	1920																
yy = N° elem.	48	W	1241	1311	1546	1592	1663	1780	2014	2061	2178						
Height mm	2000																
yy = N° elem.	50	W	1284	1357	1599	1648	1720	1841	2084	2132	2253						

Decorative & Technical Accessories



Kit Valves and Lockshield valve
See IRSAP Price List Pag. 562



Pipe cover kit
See IRSAP Price List Pag. 566

The conditions of sale are the same applied in the 2023 IRSAP Price List.

